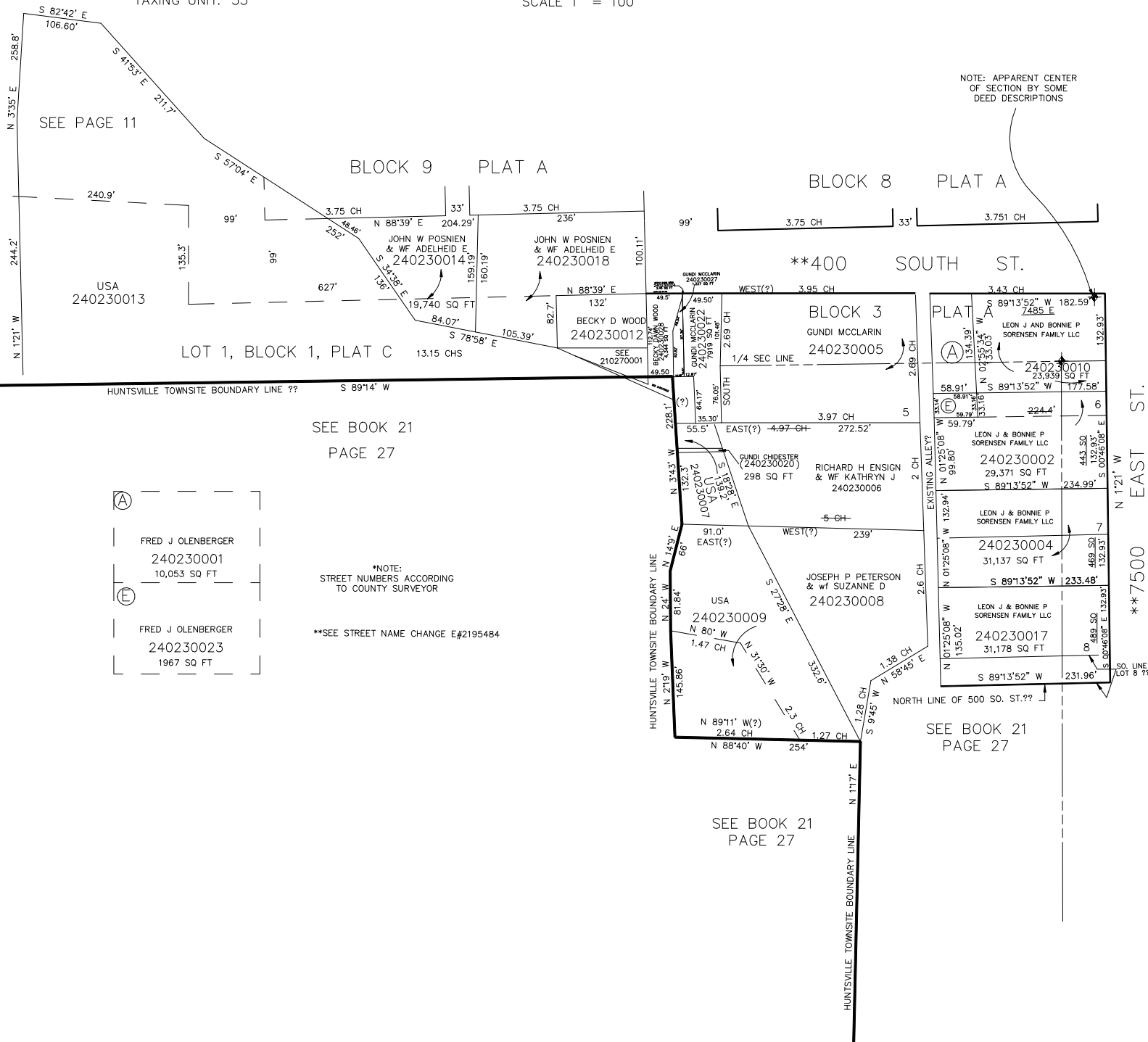


PART OF THE S 1/2
SECTION 18, T.6N., R.2E., S.L.B. & M.
& LOT 1, BLOCK 1, PLAT C & LOTS 5, 6, 7 & 8 BLK. 3, PLAT A

IN HUNTSVILLE TOWNSITE

SCALE 1" = 100'

TAXING UNIT: 35



NOTE: APPARENT CENTER OF SECTION BY SOME DEED DESCRIPTIONS

SEE PAGE 11

BLOCK 9 PLAT A

BLOCK 8 PLAT A

**400 SOUTH ST.

HUNTSVILLE TOWNSITE BOUNDARY LINE ?? S 89°14' W

SEE BOOK 21
PAGE 27

(A)	FRED J OLENBERGER 240230001 10,053 SQ FT
(E)	FRED J OLENBERGER 240230023 1967 SQ FT

*NOTE:
STREET NUMBERS ACCORDING
TO COUNTY SURVEYOR

**SEE STREET NAME CHANGE E#2195484

SEE BOOK 21
PAGE 27

SEE BOOK 21
PAGE 27

**750 EAST ST.

NORTH LINE OF 500 SO. ST.??